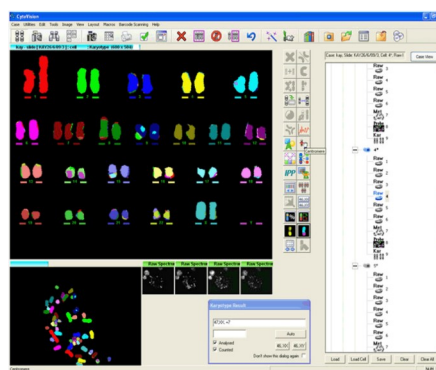
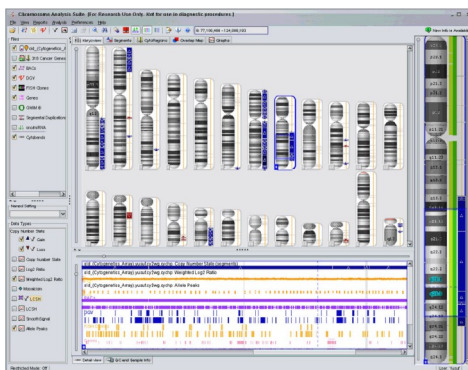


## CHROMOSOME DYNAMICS CORE

**Providing a variety of services and comprehensive data interpretation**

**We specialise in state-of-the-art molecular cytogenetics methods for the following research applications:**

- Physical mapping of clones/probes
- High resolution characterisation of chromosomal breakpoint in patients
- High resolution characterisation of transgenic insertions
- Verification of cell lines authenticity
- Karyotype analysis of ES cells and iPS cells
- Cell-based assays for gene expression analysis
- Determination of DNA damage and genomic instability
- Copy number variation (CNV), uniparental disomy and loss of heterozygosity analysis



**Combined molecular cytogenetic approach for karyotype assesment**

A combined molecular cytogenetic approach using the Affymetrix<sup>®</sup> CytoGenetics research solution for high resolution CNV analysis and multicolour karyotyping for detecting balanced and unbalanced chromosomal abnormalities using Genetix Cytovision<sup>®</sup> M-FISH analysis

**Our research strategy adopts an innovative approach to ensure the exact requirements for your projects are met using a spectrum of techniques:**

- DNA- FISH
- RNA-FISH,
- Fibre-FISH,
- Immuno-FISH,
- Multi colour chromosome karyotyping by M-FISH,
- Micronucleus Assay
- DNA Microarray technology
- Wide field & confocal fluorescence microscopy

**Data Analysis using the following tools:**

- Affymetrix<sup>®</sup> Genotyping Console<sup>™</sup>
- Affymetrix<sup>®</sup> Chromosome Analysis Suite
- Genetix Genus CytoVision<sup>®</sup>
- Molecular Devices Inc. Metamorph<sup>®</sup>
- Perkin Elmer Inc. Volocity<sup>®</sup>
- Zeiss 510 confocal LMS<sup>®</sup>
- Nikon NIS Elements<sup>®</sup>

**We welcome the opportunity to discuss your interests and opportunities to collaborate  
Contact us for more information at:**

### Chromosome Dynamics Core

Wellcome Trust Centre for Human Genetics  
University of Oxford  
Roosevelt Drive  
Oxford OX3 7BN  
United Kingdom

Core Head: Dr Cath Green  
Tel: +44 1865 287719 [Core Laboratory]  
Web: <http://www.well.ox.ac.uk/chromosome-dynamics>  
Email: [cmg1003@well.ox.ac.uk](mailto:cmg1003@well.ox.ac.uk)