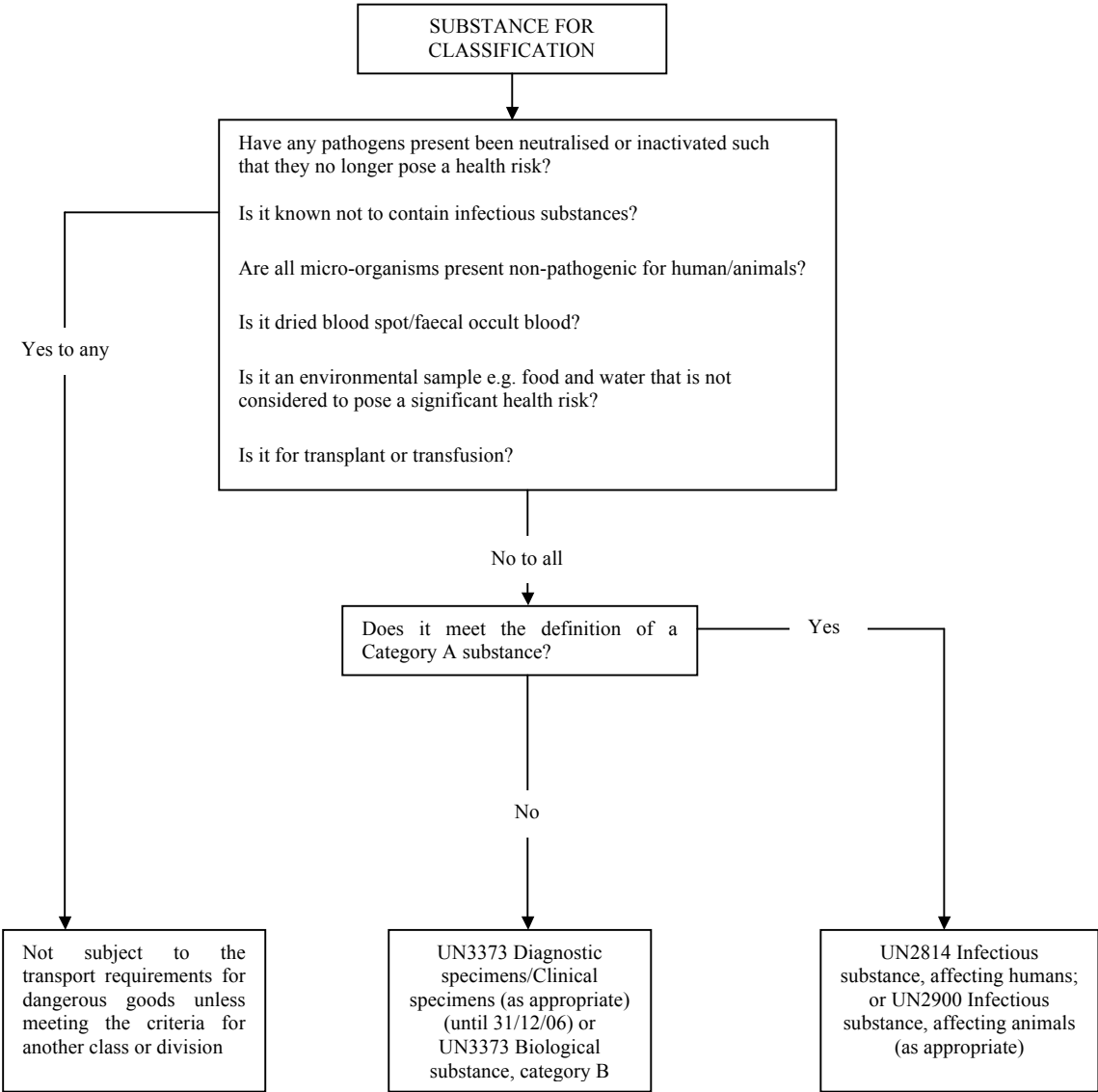


Appendix A

Legislation and guidance for work with biological agents

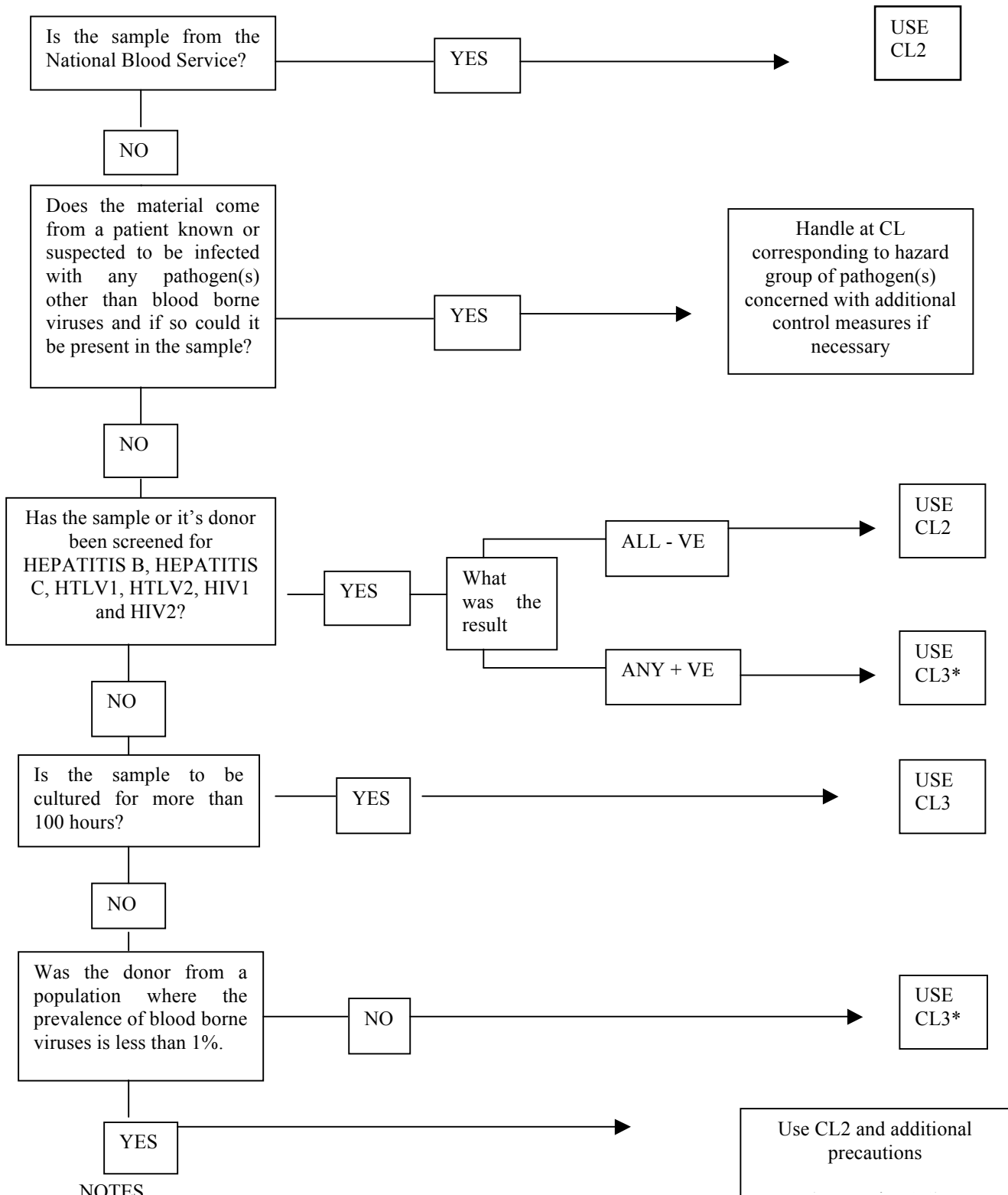
Primary Legislation	Health and Safety at Work etc Act		
General health and safety regulations	Control of Substances Hazardous to Health Regulations	Management of Health and Safety at Work Regulations	
Specific health and safety legislation	Reporting of Injuries, Diseases and Dangerous Occurrences Regulations	Carriage of Dangerous Goods (Classification, Packaging and Labelling) Regulations	Genetically Modified Organisms (Contained Use) Regulations
ADCP Guidance	Biological agents: Managing the risks in laboratories and healthcare premises		
	Protection against blood-borne infection in the workplace: HIV and hepatitis		
	Transmissible spongiform encephalopathy agents: Safe working and the prevention of infection		
	Management and control of viral haemorrhagic fevers		
	The management, design and operation of microbiological containment laboratories		
	Working safely with research animals: Management of infection risks		
DH/NHS Guidance	Guidance for Clinical Health Care Workers: Protection Against Infection with Blood-borne Viruses		
HSC/E Guidance	Safe disposal of clinical waste		
	Safe working and the prevention of infection in clinical laboratories and similar facilities		
	Advisory Committee on Genetic Modification: Compendium of guidance		

APPENDIX B: FLOWCHART FOR THE CLASSIFICATION OF INFECTIOUS SUBSTANCES FOR TRANSPORTATION



Appendix C

FLOW DIAGRAM TO AID IN ASSIGNMENT OF CONTROL MEASURES FOR WORK WITH BLOOD, BLOOD PRODUCTS AND OTHER HUMAN TISSUES – TO BE USED IN CONJUNCTION WITH GUIDANCE PROVIDED IN APPENDIX 8



NOTES

CL = Containment Level

Detailed risk assessment may indicate lower levels of containment to those given above. The Safety Office should be contacted for advice (see page 2 of main text).

*Derogations may be applied (see section 3.2) as long as any viruses that may be present are not concentrated or propagated (either intentionally or unintentionally).